



NEWCASTLE
GRAMMAR
SCHOOL

Child Protection Policy

Policy Number (PN): 8.1

Last Reviewed: February 2025



Current NGS Policies & Procedures

8.1 Child Protection Policy

Last Reviewed: February 2025 - formatting, detail relating to WWCC and Child Protection Training moved into separate policy documents, update to the name of the School's Cybersafe Platform, update to Child Protection Reporting Flowchart.

Due for review: December 2025

1. Introduction

Newcastle Grammar School (NGS) has policies and procedures that provide for student wellbeing and ensure an environment where risk of harm is minimised and students feel safe. NGS is committed to fulfilling its duty of care to all its students by:

- providing them with a learning environment that is safe, supportive and caring.
- seeking to recognise promptly when any of its students are at risk of significant harm.
- taking appropriate action to protect its students when the School or its staff become aware that its students are at risk of significant harm.
- implementing the Child Safe Standards in its policies and procedures.

1.1 Purpose and Scope

This policy sets out staff responsibilities for child protection and processes that staff must follow in relation to child protection matters.

This policy applies to all staff members, which includes employees, contractors and volunteers. Some contractors may not be required under the relevant legislation to hold a Working with Children Clearance, for the purposes of their engagement with the School.

Staff members who fail to adhere to this policy may be in breach of their terms of employment, contract or terms of engagement.

1.2 Key Legislation

There are four key pieces of child protection legislation in New South Wales:

- the Children and Young Persons (Care and Protection) Act 1998 (“Care and Protection Act”);
- the Child Protection (Working with Children) Act 2012 (“WWC Act”);
- the Children’s Guardian Act 2019 (“Children’s Guardian Act”)
- Part 3A Child safe scheme (“Children’s Guardian Act”)
- the Crimes Act 1900 (“Crimes Act”).

See the NGS Child Safe Policy for the School’s response to implementing the Child Safe Scheme and the Child Safe Standards.

1.3 Compliance and Record Keeping

The Head of School monitors compliance with this policy and securely maintains School records relevant to this policy, which includes:

- a register of staff members who have read and acknowledged that they have read and understood this policy;
- Working with Children Check clearance (WWCC clearance) verifications;
- mandatory reports to the Department of Communities and Justice (DCJ), previously known as Family and Community Services; and
- reports of reportable conduct allegations, the outcome of reportable conduct investigations, and/or criminal convictions.

2. Child Protection

The safety, protection and welfare of students is the responsibility of all staff members and encompasses:

- a duty of care to ensure that reasonable steps are taken to prevent harm to students which could reasonably have been foreseen; and
- obligations under child protection legislation.

2.1 Promoting a Child Safe Culture

The School utilises the internet Cybersafe Platform - Saasyan Assure. This is monitored by the Deputy Head – Wellbeing and School Life. Through this platform, the School is able to monitor, identify and act upon online risk-taking behaviour across the School's network. The platform is designed to capture information across the network by categorising data as possible predatory, cyberbullying, self-harm or inappropriately sexual behaviours, emails, social media posts or internet searches.

This data is reported each day at 7:30pm or for alerts identified by the system as critical an email is sent immediately to the relevant staff. An email report of all outcomes is received by the Head of Information Technologies and the Deputy Head – Wellbeing and School Life, and email reports filtered to reflect actions involving students with a specific House are sent to the appropriate Head of House. In this way, each issue identified by the Platform is sent to three members of staff. Once received, appropriate measures are taken to ensure the safety and wellbeing of students, which may include further investigations, communication home to inform parents, interventions involving the School psychologists, or, in the case of breaches of the Student Code of Conduct, disciplinary sanctions.

Staying Safe is a Secondary School Child Protection Schoolbox page developed to provide students in Years 7 to 12 with links to Kids Helpline and other online resources, as well as a confidential procedure for reporting abuse. This Schoolbox page has been developed in conjunction with a NGS community member involved in Child Services, and formerly of the NSW Police Force. The site is administered by the Deputy Head – Wellbeing and School Life.

The Primary School uses a Park Campus Suggestion Box, located in the Administration Building at Park Campus. This is monitored by the Head of Primary and the Head of Student Wellbeing K-6. It is frequently used by students for the following reasons:

- highlighting an element of their school life that they are currently enjoying;
- suggesting something that could be implemented (e.g. a lunch club);
- highlighting an issue that could be rectified (e.g. handball court rules);
- thanking a teacher or member of staff;
- raising any issues of concern to them.

2.2 Children Protection Concerns

There are different forms of child abuse. These include neglect, sexual, physical and emotional abuse.

Neglect is the continued failure by a parent or caregiver to provide a child with the basic things needed for his or her proper growth and development, such as food, clothing, shelter, medical and dental care and adequate supervision.

Sexual abuse is when someone involves a child or young person in a sexual activity by using their power over them or taking advantage of their trust. Often children are bribed or threatened physically and psychologically to make them participate in the activity. Child sexual abuse is a crime.

Physical abuse is a non-accidental injury or pattern of injuries to a child caused by a parent, caregiver or any other person. It includes but is not limited to injuries which are caused by excessive discipline, severe beatings or shakings, cigarette burns, attempted strangulation and female genital mutilation.

Injuries include bruising, lacerations or welts, burns, fractures or dislocation of joints.

Hitting a child around the head or neck and/or using a stick, belt or other object to discipline or punishing a child (in a non-trivial way) is a crime.

Emotional abuse can result in serious psychological harm, where the behaviour of their parent or caregiver damages the confidence and self-esteem of the child or young person, resulting in serious emotional deprivation or trauma.

Although it is possible for 'one-off' incidents to cause serious harm, in general it is the frequency, persistence and duration of the parental or carer behaviour that is instrumental in defining the consequences for the child.

This can include a range of behaviours such as excessive criticism, withholding affection, exposure to domestic violence, intimidation or threatening behaviour.

2.3 Child Wellbeing Concerns

Child wellbeing concerns are safety, welfare or wellbeing concerns for a child or young person that do not meet the mandatory reporting threshold, risk of significant harm in section 5.1.2.

2.4 Staff Member Responsibilities

Key legislation requires reporting of particular child protection concerns. However, as part of the School's overall commitment to child protection, all staff are required to report any child protection or

child wellbeing concerns about the safety, welfare or wellbeing of a child or young person to the Head of School.

If the allegation involves the Head of School, a report should be made to the Chair of the School Board.

3. Child Protection Training

The School provides all staff members with a copy of this policy and will provide all staff members with the opportunity to participate in child protection training annually. See the School's Child Protection Training Procedures for details of this training.

4. Working with Children Check

The WWC Act protects children by requiring a worker to have a WWCC clearance or current application to engage in child related work. Failure to do so may result in a fine or imprisonment. See the NGS Working with Children Check Policy and Procedures for details on the School's WWCC processes.

5. Mandatory Reporting

The Care and Protection Act provides for mandatory reporting of children at risk of significant harm. A child is a person under the age of 16 years and a young person is aged 16 years or above but who is under the age of 18, for the purposes of the Care and Protection Act.

Under the Care and Protection Act, mandatory reporting applies to persons who:

- in the course of their employment, deliver services including health care; welfare, education, children's services and residential services, to children; or
- hold a management position in an organisation, the duties of which include direct responsibility for, or direct supervision of, the provision of services including health care, welfare, education, children's services and residential services, to children.

All teachers are mandatory reporters. Other staff members may also be mandatory reporters. Any queries about whether other staff members are mandatory reporters should be directed to the Head of School.

5.1 Reports to Communities and Justice

A mandatory reporter must, where they have reasonable grounds to suspect that a child (under 16 years of age) is at risk of significant harm, report to the Department of Communities and Justice (DCJ) as soon as practicable. The report must include the name, or a description, of the child and the grounds for suspecting that the child is at risk of significant harm.

In addition, the School may choose to make a report to the DCJ where there are reasonable grounds to suspect a young person (16 or 17 years of age) is at risk of significant harm and there are current concerns about the safety, welfare and well-being of the young person.

At NGS, a mandatory reporter will meet their obligation if they report to the Head of School. This centralised reporting model ensures that a person in the School has all of the information that may be relevant to the circumstances of the child at risk of significant harm and addresses the risk of the School not being aware of individual incidences that amount to cumulative harm.

5.1.1 Reasonable Grounds

'Reasonable grounds' refers to the need to have an objective basis for suspecting that a child or young person may be at risk of significant harm, based on:

- first-hand observations of the child, young person or family;
- what the child, young person, parent or another person has disclosed;
- what can reasonably be inferred based on professional training and/or experience.

'Reasonable grounds' does not mean a person is required to confirm their suspicions or have clear proof before making a report.

5.1.2 Significant Harm

A child or young person is 'at risk of significant harm' if current concerns exist for the safety, welfare or wellbeing of the child or young person because of the presence, to a significant extent, of any one or more of the following circumstances:

- the child's or young person's basic physical or psychological needs are not being met or are at risk of not being met;
- the parents or other caregivers have not arranged and are unable or unwilling to arrange for the child or young person to receive necessary medical care;
- in the case of a child or young person who is required to attend school in accordance with the Education Act 1990, the parents or other caregivers have not arranged and are unable or

unwilling to arrange for the child or young person to receive an education in accordance with that Act;

- the child or young person has been, or is at risk of being, physically or sexually abused or ill-treated;
- the child or young person is living in a household where there have been incidents of domestic violence and as a consequence, the child or young person is at risk of serious physical or psychological harm,
- a parent or other caregiver has behaved in such a way towards the child or young person, that the child or young person has suffered or is at risk of suffering serious psychological harm;
- the child was the subject of a pre-natal report under section 25 of the Care and Protection Act and the birth mother of the child did not engage successfully with support services to eliminate, or minimise to the lowest level reasonably practical, the risk factors that gave rise to the report.

The term 'significant' in the phrase 'to a significant extent', means that which is sufficiently serious to warrant a response by a statutory authority irrespective of a family's consent.

What is significant, is not minor or trivial and may reasonably be expected to produce a substantial and demonstrably adverse impact on the child or young person's safety, welfare or wellbeing.

The significance can result from a single act or omission or an accumulation of these.

5.2 Process for Mandatory Reporting - See Appendix: Child Protection Reporting Flowchart

5.2.1 Staff Members

Staff members must raise concerns about a child or young person who may be at risk of significant harm with the Head of School as soon as possible to discuss whether the matter meets the threshold of 'risk of significant harm' and the steps required to report the matter.

However, if there is an immediate danger to the child or young person and the Head of School or next most senior member of staff is not contactable, staff members should contact the Police and/or the Child Protection Helpline (13 21 11) directly and then advise the Head of School or next most senior member of staff at the School as soon as possible.

Staff members are not required to and must not, undertake any investigation of the matter. Staff members are not permitted to inform the parents or caregivers that a report to the DCJ has been made.

Staff members are required to deal with the matter confidentially and only disclose it to the persons referred to above or as required to comply with mandatory reporting obligations. Failure to maintain confidentiality will not only be a breach of this policy, but could incite potential civil proceedings for defamation.

5.2.2 The School

In general, the Head of School or delegate will report these matters to the DCJ and where necessary, the Police. This is supported by the DCJ in accordance with best practice principles.

5.3 Process for Reporting Concerns about Students

5.3.1 Staff Members

The Care and Protection Act outlines a mandatory reporter's obligation to report to the DCJ concerns about risk of significant harm. However, to ensure centralised reporting, all staff members are required to report any concern regarding the safety, welfare and wellbeing of a student to the Head of School or delegate. Staff members who are unsure as to whether a matter meets the threshold of 'risk of significant harm', should report their concern to the Head of School or delegate regardless.

Staff members are required to deal with all reports regarding the safety, welfare or wellbeing of a student confidentially and only disclose it to the Head of School and any other person the Head of School nominates.

6. Reportable Conduct - See Appendix: Child Protection Reporting Flowchart

Section 29 of the Children's Guardian Act 2019 requires the Head of School to notify the Office of the Children's Guardian (OCG) of all allegations of reportable conduct and convictions involving an 'employee' and the outcome of the School's investigation of these allegations. Under the Children's Guardian Act 2019, allegations of child abuse only fall within the reportable conduct jurisdiction if the involved individual is an employee of the relevant entity at the time when the allegation becomes known by the Head of Entity (Head of School).

Reportable Conduct:

- involves a child (a person under the age of 18 years) at the time of the alleged incident; and
- involves certain defined conduct as described in the Act (see below).

The OCG:

- must keep under scrutiny the systems for preventing reportable conduct by employees of non-government schools and the handling of, or response to, reportable allegations (including allegations which are exempt from notification) or convictions;
- must receive and assess notifications from non-government schools concerning reportable conduct or reportable convictions;
- is required to oversee or monitor the conduct of investigations by non-government schools into allegations of reportable conduct or reportable convictions;
- must determine whether an investigation that has been monitored has been conducted properly and whether appropriate action has been taken as a result of the investigation;
- may directly investigate an allegation of reportable conduct or reportable conviction against an employee of a non-government school, or the handling of or response to such a matter (eg arising out of complaints by the person who is the subject of an allegation); and
- may investigate the way in which a relevant entity has dealt with, or is dealing with, a report, complaint or notification, if the OCG considers it appropriate to do so.

6.1 Reportable conduct

Under the Children's Guardian Act 2019, *reportable conduct* is defined as:

- a sexual offence;
- sexual misconduct;
- an assault against a child;
- ill-treatment of a child;
- neglect of a child;
- an offence under section 43B (failure to protect) or section 316A (failure to report) of the Crimes Act 1900; and
- behaviour that causes significant emotional or psychological harm to a child.

Reportable conduct does not extend to:

(a) conduct that is reasonable for the purposes of the discipline, management or care of children, having regard to the age, maturity, health or other characteristics of the children and to any relevant codes of conduct or professional standards; or

(b) the use of physical force that, in all the circumstances, is trivial or negligible and the circumstances in which it was used have been investigated and the result of the investigation has been recorded in accordance with appropriate procedures; or

(c) conduct of a class or kind exempted from being reportable conduct by the Children’s Guardian under section 30.

Example of conduct for paragraph (a)

- a school teacher raising his or her voice in order to attract attention or restore order in a classroom

Examples of conduct for paragraph (b)

- touching a child in order to attract the child’s attention
- momentarily restraining a child to prevent the child hurting themselves or others
- touching a child to guide or comfort the child

6.1.1 Definitions

The following definitions relate to reportable conduct:

Sexual offence: an offence of a sexual nature under a law of the State, another State, a Territory, or the Commonwealth, committed against, with or in the presence of a child, such as:

- sexual touching of a child;
- a child grooming offence;
- production, dissemination or possession of child abuse material.

Definitions of ‘grooming’, within child protection legislation, are complex. Under the Crimes Act, grooming or procuring a child under the age of 16 years for unlawful sexual activity is classed as a sexual offence. The Crimes Act (s73) also extends the age of consent to 18 years when a child is in a ‘special care’ relationship. Under Schedule 1(2) of the WWC Act, grooming is recognised as a form of sexual misconduct. The Children’s Guardian Act 2019 and this Child Protection Policy reflect these definitions within the context of the Reportable Conduct Scheme (Division 2).

An alleged sexual offence does not have to be the subject of criminal investigation or charges for it to be categorised as a reportable allegation of sexual offence.

Sexual misconduct: conduct with, towards or in the presence of a child that is sexual in nature (but not a sexual offence). The Act provides the following (non-exhaustive) examples:

- descriptions of sexual acts without a legitimate reason to provide the descriptions;
- sexual comments, conversations or communications;

- comments to a child that express a desire to act in a sexual manner towards the child, or another child.

Note – crossing professional boundaries comes within the scope of the scheme to the extent that the alleged conduct meets the definition of sexual misconduct. That is, the conduct with, towards or in the presence of a child that is sexual in nature (but is not a sexual offence).

Assault: an assault can occur when a person intentionally or recklessly (ie. knows the assault is possible but ignores the risk):

- applies physical force against a child without lawful justification or excuse – such as hitting, striking, kicking, punching or dragging a child (actual physical force); or
- causes a child to apprehend the immediate and unlawful use of physical force against them – such as threatening to physically harm a child through words and/or gestures regardless of whether the person actually intends to apply any force (apprehension of physical force)

Ill-treatment: is defined as conduct towards a child that is:

- unreasonable; and
- seriously inappropriate, improper, inhumane or cruel.

Ill-treatment can include a range of conduct such as making excessive or degrading demands of a child; a pattern of hostile or degrading comments or behaviour towards a child; and using inappropriate forms of behaviour management towards a child.

Neglect: defined as a significant failure to provide adequate and proper food, supervision, nursing, clothing, medical aid or lodging for a child that causes or is likely to cause harm - by a person who has care and/or has responsibility towards a child.

Neglect can be an ongoing situation of repeated failure by a caregiver to meet a child's physical or psychological needs, or a single significant incident where a caregiver fails to fulfill a duty or obligation, resulting in actual harm to a child where there is the potential for significant harm to a child. Examples of neglect include failing to protect a child from abuse and exposing a child to a harmful environment.

- Behaviour that causes significant **emotional or psychological harm** to a child is conduct that is intentional or reckless (without reasonable excuse), obviously or very clearly unreasonable and which results in significant emotional harm or trauma to a child.

For a reportable allegation involving psychological harm, the following elements must be present:

- An obviously or very clearly unreasonable or serious act or series of acts that the employees knew or ought to have known was unacceptable, and
- Evidence of psychological harm to the child that is more than transient, including displaying patterns of 'out of character behaviour', regression in behaviour, distress, anxiety, physical symptoms or self-harm, and
- An alleged causal link between the employee's conduct and the significant emotional or psychological harm to the child.

Reportable allegation is an allegation that an employee has engaged in conduct that may be reportable conduct.

Reportable conviction means a conviction (including a finding of guilt without the court proceeding to a conviction), in NSW or elsewhere, of an offence involving reportable conduct.

Employee of an entity includes:

- an individual employed by, or in, the entity
- a volunteer providing services to children
- a contractor engaged directly by the entity (or by a third party) where the contractor holds, or is required to hold, a WWCC clearance for the purposes of their work with an entity; and
- a person engaged by a religious body where that person holds, or is required to hold, a WWCC clearance for the purposes of their work with the religious body.

ESOA (Employee Subject of the Allegation).

6.2 Process for reporting of reportable conduct allegations or convictions

6.2.1 Staff members

Any concerns about any other employee engaging in conduct that is considered inappropriate, or reportable conduct, or any allegation of inappropriate or reportable conduct made to the employee or about the employee themselves must be reported to the Head of School. Where it is uncertain if the conduct is reportable conduct but is considered inappropriate behaviour this must also be reported.

Staff members must also report to the Head of School when they become aware that an employee has been charged with or convicted of an offence (including a finding of guilt without the court proceeding to a conviction) involving reportable conduct. This includes information relating to the employee themselves.

If the allegation involves the Head of School, the staff member must report to the Chairman of the School Board.

6.2.2 Parents, carers and community members

Parents, carer and community members are encouraged to report any conduct that is in their view inappropriate, reportable or criminal conduct to the Head of School or their delegate. All such reports will be dealt with in accordance with the School's complaint handling procedures.

6.2.3 The School

The Head of School, as the Head of Entity under the Children's Guardian Act 2019, must:

- Ensure specified systems are in place for preventing, detecting and responding to reportable allegations or convictions
- Submit a 7-day notification form to the OCG within seven (7) business days of becoming aware of a reportable allegation or conviction against an employee of the entity (unless the Head of the Entity has a reasonable excuse),

The notification should include the following information:

- (a) that a report has been received in relation to an employee of the School, and
- (b) the type of reportable conduct, and
- (c) the name of the employee, and
- (d) the name and contact details of School and the Head of Entity, and
- (e) for a reportable allegation, whether it has been reported to Police, and
- (f) if a report has been made to the Child Protection Helpline, that a report has been made, and
- (g) the nature of the relevant entity's initial risk assessment and risk management action.

The notice must also include the following, if known to the Head of Entity:

- (a) details of the reportable allegation or conviction considered to be a reportable conviction,
- (b) the date of birth and working with children number, if any, of the employee the subject of the report,

- (c) the police report reference number (if Police were notified),
- (d) the report reference number if reported to the Child Protection Helpline,
- (e) the names of other relevant entities that employ or engage the employee, whether or not directly, to provide a service to children, including as a volunteer or contractor.

Maximum penalty for failure to notify within seven (7) business days – 10 penalty units.

6.3 Process for investigating an allegation of reportable conduct

The Head of School is responsible for ensuring that the following steps are taken to investigate an allegation of reportable conduct.

6.3.1 Initial steps

Once an allegation of reportable conduct against an employee is received, the Head of School is required to:

- determine whether it is an allegation of reportable conduct;
- assess whether the DCJ or the Police need to be notified (ie. if reasonable grounds to suspect that a child is at risk of significant harm or a potential criminal offence). If they have been notified, seek clearance from these statutory agencies prior to the School proceeding with the reportable conduct investigation;
- notify the child's parents (unless to do so would be likely to compromise the investigation or any investigation by the DCJ or Police);
- notify the OCG within seven (7) business days of receiving the allegation;
- carry out a risk assessment and take action to reduce/remove risk, where appropriate; and
- provide an initial letter to the Employee Subject of the Allegation (ESOA) advising that an allegation of reportable conduct has been made against them and the School's responsibility to investigate this matter under Section 34 of the Children's Guardian Act 2019; and
- investigate the allegation or appoint someone to investigate the allegation.

6.3.2 Investigation principles

During the investigation of a reportable conduct allegation the School will:

- follow the principles of procedural fairness;
- inform ESOA of the substance of any allegations made against them, at the appropriate time in the investigation, and provide them with a reasonable opportunity to respond to the allegations;

- make reasonable enquiries or investigations before making a decision;
- avoid conflicts of interest;
- conduct the investigation without unjustifiable delay;
- handle the matter as confidentially as possible; and
- provide appropriate support for all parties including the child/children, witnesses and the ESOA.

6.3.3 Investigation steps

In an investigation the Head of School or appointed investigator will generally:

- interview relevant witnesses and gather relevant documentation;
- provide a letter of allegation to the ESOA;
- provide the ESOA with the opportunity to provide a response to the allegations either in writing or at Interview;
- consider relevant evidence and make a preliminary finding in accordance with the OCG guidelines;
- inform the ESOA of the preliminary finding in writing by the Head of School and provide them with a further opportunity to respond or make a further submission prior to the matter moving to final findings;
- consider any response provided by the ESOA;
- make a final finding in accordance with the OCG guidelines;
- decide on the disciplinary action, if any, to be taken against the ESOA;
- if it is completed, send the final report to the OCG within 30 days after having received the allegation, as per section 36 of the Children's Guardian Act 2019.
- should the final report be unfinished within 30 days, the Head of School must provide, at minimum, an interim report to the OCG within 30 days of having received the allegation, as per section 38 of the Children's Guardian Act 2019.

Submission of an interim report must include;

- a reason for not providing the final report within 30 days and an estimated time frame for completion of the report.
- specific information, including (if known); the facts and circumstances of the reportable allegation; any known information about a reportable conviction; action taken since the OCG received a notification about the reportable allegation or reportable conviction; further action the Head of School proposes to take in relation to the reportable allegation or reportable conviction; including if the Head of School proposes to take no further action; the reasons for

the action taken and the action proposed to be taken or the reasons for the decision to take no further action; other information prescribed by the regulations; and

- be accompanied by copies of documents in the School's possession, including transcripts of interviews and copies of evidence.

The steps outlined above may need to be varied on occasion to meet particular circumstances. For example, it may be necessary to take different steps where the matter is also being investigated by the DCJ or Police.

An ESOA may have an appropriate support person with them during the interview process. Such a person is there for support only and as a witness to the proceedings and not as an advocate or to take an active role.

6.4 Risk management throughout an investigation of a reportable conduct allegation

Risk management means identifying the potential for an incident or accident to occur and taking steps to reduce the likelihood or severity of its occurrence.

The Head of School is responsible for risk management throughout the investigation and will assess risk at the beginning of the investigation, during and at the end of the investigation.

6.4.1 Initial risk assessment

Following an allegation of reportable conduct against an employee, the Head of School conducts an initial risk assessment to identify and minimise the risks to:

- the child(ren) who are the subject of the allegation;
- other children with whom the employee may have contact;
- the ESOA;
- the School, and
- the proper investigation of the allegation.

The factors which will be considered during the risk assessment include:

- the nature and seriousness of the allegations;
- the vulnerability of the child(ren) the ESOA has contact with at work;
- the nature of the position occupied by the ESOA;
- the level of supervision of the ESOA; and
- the disciplinary history or safety of the ESOA and possible risks to the investigation.

The Head of School will take appropriate action to minimise risks. This may include the ESOA being temporarily relieved of some duties, being required not to have contact with certain students, being asked to take paid leave, or being suspended from duty. When taking action to address any risks identified, the School will take into consideration both the needs of the child(ren) and the ESOA.

A decision to take action on the basis of a risk assessment is not indicative of the findings of the matter. Until the investigation is completed and a finding is made, any action, such as an employee being suspended, is not to be considered to be an indication that the alleged conduct by the employee did occur.

6.4.2 Ongoing risk assessment

The Head of School will continually monitor risk during the investigation including in the light of any new relevant information that emerges.

6.4.3 Findings

At the completion of the investigation, a finding will be made in relation to the allegation and a decision made by the Head of School regarding what action, if any, is required in relation to the ESOA, the child(ren) involved and any other parties.

6.4.4 Information for the ESOA

The ESOA will be advised:

- that an allegation has been made against them (at the appropriate time in the investigation);
and
- of the substance of the allegation, or of any preliminary finding and the final finding.

The ESOA does not automatically have the right to:

- know or have confirmed the identity of the person who made the allegation; or
- be shown the content of the OCG notification form or other investigation material that reveals information provided by other employees or witnesses.

The WWC Act enables a person who has a sustained finding referred to the OCG to request access to the records held by the School in relation to the finding of misconduct involving children, once final findings are made. The entitlements of a person to request access to information in terms of section 46 of the WWC Act is enlivened when a finding of misconduct involving children has been made.

6.4.5 Disciplinary action

As a result of the allegations, investigation or final findings, the School may take disciplinary action against the ESOA (including termination of employment).

In relation to any disciplinary action the School will give the ESOA:

- details of the proposed disciplinary action; and
- a reasonable opportunity to respond before a final decision is made.

6.4.6 Confidentiality

It is important when dealing with allegations of reportable conduct that the matter be dealt with as confidentially as possible. The School requires that all parties maintain confidentiality during the investigation including in relation to the handling and storing of documents and records. Records about allegations of reportable conduct against employees will be kept securely by the EA to the Head of School and will be accessible by the Head of School or with the Head of School's express authority. No employee may comment to the media about an allegation of reportable conduct unless expressly authorised by the Head of School to do so. Staff members who become aware of a breach of confidentiality in relation to a reportable conduct allegation must advise the Head of School.

7. Criminal Offences

In 2018 the Crimes Act was amended to adopt recommendations of the Royal Commission into Institutional Responses to Child Sexual Abuse. The new offences are designed to prevent child abuse and to bring abuse that has already occurred to the attention of the Police.

7.1 Failure to protect offence (Crimes Act 1900 – NSW)

An adult working in a school, therefore all staff members, will commit an offence if they know another adult working there poses a serious risk of committing a child abuse offence and they have the power to reduce or remove the risk, and they negligently fail to do so either by acts and/or omissions. This offence is targeted at those in positions of authority and responsibility working with children who turn a blind eye to a known and serious risk rather than using their power to protect children.

7.2 Failure to report offence (Crimes Act 1900 – NSW)

Any adult, and therefore all staff members, will commit an offence if they know, believe or reasonably ought to know that a child abuse offence has been committed and fail to report that information to

Police, without a reasonable excuse. A reasonable excuse would include where the adult has reported the matter to the Head of School and is aware that the Head of School has reported the matter to the Police.

7.3 Special Care Relationships (Crimes Act 1900 – NSW)

It is a crime in NSW for a staff member, volunteer or contractor to have a sexual relationship with a student where there is a special care relationship. The Act provides that a young person is under an adult's special care if the adult is a member of the teaching staff of the School at which the young person is a student; or has an established personal relationship with the young person in connection with the provision of religious, sporting, musical or other instruction.

The Special Care (sexual intercourse) offence under s73 was supplemented by an additional special care offence involving sexual touching now under s73A of the Crimes Act. The new offence under s73A will expand special care offences to also apply to non-penetrative sexual touching. The offence will protect children aged 16-17 years from inappropriate sexual contact with teachers and others who have special care of the child.

8. Related Policies

- Staff Code of Professional Conduct
- Volunteer, Contractor and Visitor Code of Conduct
- Casual Staff Code of Conduct
- Professional Boundaries Policy and Procedures
- Volunteer, Contractor and Visitor Management Policy and Procedures
- Working with Children Check Policy
- Child Safe Policy
- Complaints and Grievance Resolution Policy and Procedures - School Community
- Work Health and Safety and Risk Management Policy and Procedures
- Discrimination, Harassment and Bullying Policy – Staff
- Bullying Prevention and Intervention Policy - Students

9. Acknowledgement

I _____ have read, understood and agree to comply with the terms of this Child Protection Policy.

Signed

Dated

10. References

AISNSW Child Protection Policy advice document

NSW Department of Communities and Justice

<https://www.dcj.nsw.gov.au>

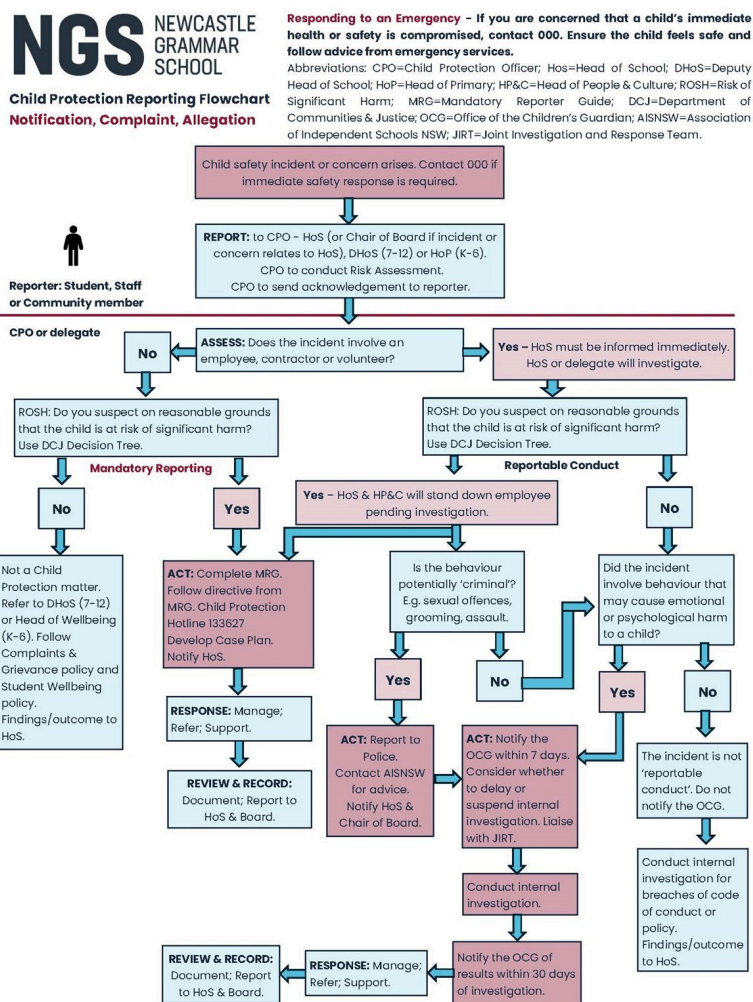
The Office of the Children's Guardian

<https://www.kidsguardian.nsw.gov.au>

Department of Premier and Cabinet – Keep Them Safe

www.keepthemsafe.nsw.gov.au

Attachment



Child Protection Reporting Flowchart V2 August 2024 to be reviewed annually